



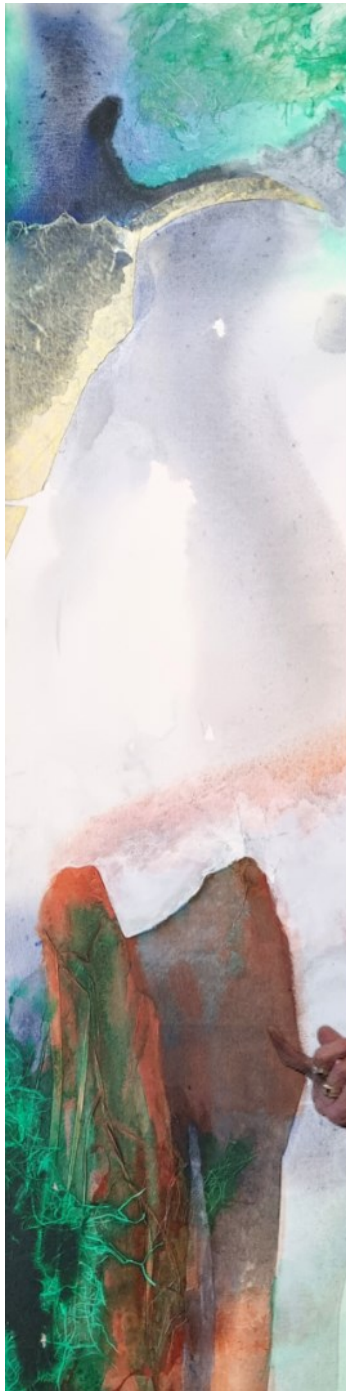
BLUE MOUNTAINS CREATIVE ARTS CENTRE NEWSLETTER

November 2022

WEBSITE: www.bmcac.org.au

FACEBOOK: [bmcac](#) & [bmcacsaturdaypotters](#)

INSTAGRAM [lifedrawing_glenbrook](#)



**90TH BIRTHDAY
ARTIST RETROSPECTIVE
& NEW CONTEMPORARY PIECES**

Joy Myers Creed

SPONSORED BY BLUE MOUNTAINS CREATIVE ARTS CENTRE
Corner of Hare & Moore Street, Glenbrook NSW

OPENING NIGHT: FRIDAY 2 DEC 7.30-9.30PM

ADDRESS BY MARK GREENHILL

**EXHIBITION OPEN 10AM-4PM
SAT & SUN 3-4 DECEMBER 2022**

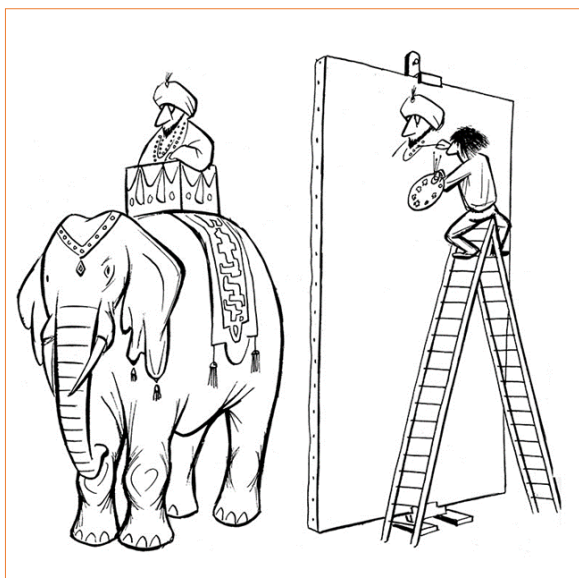


Joy: 0422088741

Our 'Hare Street' Centre is located on the traditional homeland of the Dharug and Gundungurra people. We recognize and pay respect to the traditional custodians of country past, present and emerging.

CONTENTS

- 3 Pottery Facilitator's Report
- 4 Gardening & Grants Report
General Business
- 5 & 6 Celebrating Joy Myers Creed
- 7 Tapestries by Susie Summers
- 8 Amanda Bradley exhibition
- 9 Poetry Corner
- 10 –13 What's On?
- 14 Our valued sponsors



Cartoon by famous French cartoonist Chaval

EDITOR'S NOTE

"Anyone who keeps the ability to see beauty in every age of life really never grows old" says a quote by Franz Kafka. This certainly applies to our beloved member Joy Myers Creed who soon is to celebrate her 90th birthday (see pages 5 & 6).

Happy Birthday, Joy!

Apart from Joy's upcoming exhibition on 2 - 4 December your attention is drawn to Amanda Bradley's in the Jade Yurt to conclude her residency (page 8).

Thirdly, our member Susie Summers' tapestries continue being on show at Wotso in Pyrmont until 2 December (page 7).

Please also consider Heather Dunn's exhibition at Gallery One88, in Katoomba until 14 November (page 11).

Many thanks to Katherine Kennedy for promotional material and text about Joy, Susie and Heather.

Please send contributions for 'Creations' magazine in 'word' format to rudich7@dodo.com

Best wishes,

Rudi Christen
'Creations' Editor

We propose to hold a Xmas Fair on the 26th November.

Every member is welcome.

Bring a table to display your arts and craft, and an umbrella for shade.

You will be responsible for the presentation of your table and the sale of your goods.

Sales to go through the gallery Tyro credit card set-up with 10% of sales to BMCAC..

Get in touch with us ! We'd like to hear from you.

Alison JAMES	President & Workshop Coordinator	0416 957 688	arty_ali@hotmail.com.au
Ingrid RUSSELL	Vice President & Arts Director	0423 124 473	bmcac.mail@gmail.com
Bronwyn CAMPBELL	Secretary & Pottery Facilitator	0411 041 054	a.b.campbell@optusnet.com.au
Liz BRYDEN	Gardening & Grants	0447 474 462	ebryden@bigpond.com
Katherine KENNEDY	Printmaking Coordinator		katherine.kennedy6@hotmail.com

What a lot can happen in a month – our kiln room has undergone a complete renovation and left a few of us quite exhausted. Everything had to be taken out, the room thoroughly cleaned, sections of the frame replaced (due to white ant damage), a new roller door was installed, the floor painted, our shelf system was removed, redesigned, and new shelves installed and today all the equipment was returned to the room.

Some big thank-yous have to be said to:

- David Attwood for giving the room an industrial clean.
- David A and David Russell for replacing damaged timber work and sorting the white ant situation.
- Alison for painting the floor, our new kiln shelf stand, buying and putting the new shelves together and attaching the corner shelves to the wall, arranging the installation of the new roller door and sourcing some awesome new kiln gloves.
- Alan Campbell for cutting us some boards to protect our new bench top and attaching window shelf to the wall.

All this work has taken many days of volunteered time, so thank you thank you, thank you.

Very sadly, in collaboration with others, I made the decision to cancel our "Clay Creations" exhibition this year. This was an agonising decision but due to the fact that only 5 exhibitors were available and we would have probably only had 8 tables of work, I thought it didn't warrant all the organisation and time needed to put into an exhibition. The Glenbrook Theatre people were wonderful and didn't charge us a cancellation fee and have booked us in for an exhibition same time next year when hopefully we will have more people available.

We are looking into getting some more suitable work boards for hand-building (large squares covered with a sail cloth like material). Many members complain that the boards that have been left on the tables are far too drying for the clay and cause it to crack before they can get their pieces built.

The old table that was in the kiln room will have a new marine ply board attached to the top and be cemented into the ground next to the kiln room outside for wedging. We used to have one there before until someone or a group of someones decided they might like it. It was very, very heavy, so would have taken more than one to move it – thus the cementing.

Some cork brick stored in the storeroom have been returned to Wendy Field as we have an oversupply and they were originally hers.

Due to the donation of all our looms and spinning wheels to the NSW Spinners and Weavers Guild, we have gained a lot of storage space in the storeroom. A wall of shelves has been allocated exclusively to the potters and we would really appreciate it if no other equipment was put in this space. We have a few bits and pieces on other shelves to transfer to these shelves, so all the pottery will be in a single space. This now means that we no longer need to buy a storage shed for the potters.

Decorating tip: Create marbling using lustres

Fill a basin with water, add a little vinegar to help colours break.

Drop some different lustres in and swirl with a stick.

Dip your pot in the water and pull it out smoothly. The lustre will cling to the pot.

Fire to 750 degrees.

From "Practical Solutions for Potter" By Gill Bliss

Gardening

The Iris are flowering and bringing a purple haze to the front garden plus a lovely pink from Geranium and Daises. Everything is flourishing, almost too much. So just cutting back is on the agenda and removal of leaves. As more mulch is needed to keep weeds down the committee moved to buy \$100m worth of mulch for the garden.

Grants

We are grateful to have received a Blue Mountains Council contribution of \$990 to replace the railing on our ramp for the disabled.

We are still awaiting communication from Susan Templeton's office regarding our expression of interest for a volunteers grant.

GENERAL BUSINESS

- **Termite Treatment:**

The kiln room and main room have been treated for termites at a total cost for inspection and treatment of \$1,450. Andrea has kindly offered to fill the holes that were drilled into the walls as a result of the treatment.

- **Jade Yurt:**

Committee members were invited to preview of Amanda Bradley's exhibition "Breathe" before the meeting on 3 November. All agreed it was very well presented and she should be extremely proud of the work she has produced. A special favourite was her painting "Lungs".

Amanda finishes in the Jade Yurt after her exhibition on the 12/13 November .

Shona White will rent the Jade Yurt from the 5 December to 29 May.

- **Publicity:**

Andrea displayed the book "Out of the Blue", a list of all the Blue Mountains Galleries, including our Hare St Gallery. The committee decided that we purchase 15 copies which will be sold for \$25 in the gallery.

It was also decided to purchase 1000 updated Hare St Cards.

- **Proposal:**

Artists are to be encouraged to hang their work in the main room.

- **Building Co-ordinator:**

Sadly, David Russell is going through a very challenging time health-wise at the moment and all our thoughts are with him, Ingrid and their family.

Join us in celebrating Joy Myers Creed.

Joy is celebrating her arts career and 90th birthday with a retrospective art exhibition. This exhibition will include new contemporary artworks together with selected works from Joy's professional history hosted by the Blue Mountains Creative Arts Centre in December.

This exhibition will include acrylic and collage paintings, etchings, and everything in between. Landscapes and figurative artworks will feature prominently in this exhibition with a creative and experimental approach for which Joy has become known.

Joy has returned to the 'feather' motif many times throughout her arts career and at times uses the feather to unify her works *"feathers are at the top of my list of favourite things"* (J. Myers Creed).



Joy has enjoyed a career-spanning interest in the figure and facilitated a life drawing group for over 30 years at the Blue Mountains Creative Art Centre. During which time Joy's goal was simply to practice and improve her ability to demonstrate the "Human Condition" and to encourage engagement between the viewer and the artwork.

As she explains: *"...my long-term project of making art that alludes to the "Human Condition" started very early in my art training at TAFE where I decided that depicting people in a work of art was a good way to have the viewer relate to, or be moved by, the work."*

"At university I noted images with a human connection or slant, appeared to garner a much stronger response from the observer than those of works of nature or abstract ideas that lacked that human connection. It seemed to me that whilst these types of works may have been safer or perhaps easier to look at, I had within myself a constant challenge - I wanted to see images about mankind that I had not encountered before, I was also searching as to how to allude to some type of spiritual dimension that I could hint at, show, uncover, or demonstrate in new and exciting ways".



Joy in her studio: *"It delights me to create work like no other that I have seen before"*



Nationwide Curating is featuring
an Exhibition of Tapestries by SUSIE SUMMERS,

courtesy of our corporate partner WOTSO (Flexible workspaces)
and our installations & curating team.

The Exhibition is open until 2 December
at WOTSO, 55 Pymont Bridge Road, Pymont.



Susie is based in the Blue Mountains. Besides being a tapestry artist she is also a printmaker and member of the BMCAC Life Drawing group.

"I love tapestry weaving, the lineal quality, pixelated & textural effects and ability to mix & blend thin strands of colour to achieve different shades". (Susie Summers)

At the meeting with the artist on 3 November,
L to R: Katherine Kennedy, Curator; Susie Summers and her friend Emma Pierce.



Susie Summers, Florabella Pass 2, 2022,
Tapestry, 63cm x 66cm



Susie Summers, Ross Lookout 1, 2022,
Tapestry, 65cm x 67cm



Amanda Bradley

Breathe **Art Exhibition**

visual art pottery

NOVEMBER 12-13, 2022

Jade Studio, Glenbrook
corner Moore and Hare Street



Poetry Corner

Poem that Wanted to Be a Brueghel

William Stab

*Snowy road with red
soil ruts where a wagon struggled.
Bare trees in middle distance
man with stick and pack
trudging uphill, off balance.
Is he running? And then I'm*

*back at the podium, all the suits
in the room looking at me like
where did you go?*

*Something was cold and afraid.
Someone went looking.*

*It must've been amazing
for the great painters when it drifted
into their eyes—the moment
they could freeze the action
before the terrible realization
that would echo through generations.*

*Field work in a dry summer.
Blue sky and blaze yellow.
Sweat on the brow of my father
just a boy now, seventeen, lean
and earnest, tight with exertion
pounding fence posts
with a man I never met, his father.*

*Dad swings the sledge down
just as the blank man, glancing back
toward the distant barn, places his hand
gently on top of the post
to say that's enough. That's good, son.*

*And the hammer is a breezy blur
stopped magically in air
to never disfigure, sever
flesh or family tree but still I
dab paint over my father's eyes
so he won't have to see.*



Pieter Brueghel the Younger - The Numbering at Bethlehem (1607)

WHAT'S ON ?

Workshops, Galleries, Exhibitions, Prize Entries, Coming Events

IMPORTANT DATES

Fri. 11 Nov. (opening), Sat. 12 & Sun. 13 Nov. **Amanda Bradley's Exhibition** *"Breathe"* to celebrate the end of her residency in the Jade Yurt.

Fri. 2 Dec.(opening), Sat. 3 & Sun. 4 Dec. **90th Birthday Exhibition for Joy Myers Creed**
"Artist Retrospective and New Contemporary Pieces"

Thu. 8 December, 7.30pm, Next Committee Meeting

Fri. 16 to Sun. 18 Dec.: Mike Wall Exhibition; the winner from the Covid Interrupted Print Prize 2021, **Heather Donne** will hold her exhibition at **Gallery One88**

WORKSHOP SCHEDULE

Sat. 10 Dec.: **Creative Women's Gathering** with Andrea Ketterling, (0416 727 030 for details).

BLUE MOUNTAINS CULTURAL CENTRE

30 Parke Street, Katoomba 2780

Gallery and Shop: Monday – Friday 10am – 5pm, Saturday + Sunday – 10am – 4pm

Adrienne Richards: The Way We Live Now

8 October— 27 November

Adrienne Richards' exhibition *The Way We Live Now* uses drawing and ceramics to explore the concept of 'Bio history' – the study of human situations, past and present, against the backdrop of life on Earth.

Inspired by Stephen Boyden's book *The Bionarrative – the story of life and hope for the future* Adrienne has created an imaginary archaeological dig where the fragments and shards of humans' material culture are juxtaposed with those of the rest of our living planet.

Adrienne's hand-built ceramic forms, with applied drawings, surface decoration and glazing techniques come together to highlight environmental issues, humans' place on Earth and to question 'the way we live now'.



RESILIENT

An Exhibition by
HEATHER DUNN

A six week residency at the Fremantle Arts Centre in 2021 was pivotal in researching the process for these prints and there are plenty more "what if's" to explore.

Alongside these prints are a small collection of collages, mainly botanically printed, that are the forerunner to these works on paper. So often the progression of work and process is not seen, but what has gone before leads to new places through play and experimentation.

Meet the Artist

Saturday 5th NOVEMBER 3-5pm

On exhibition

3rd – 14th NOVEMBER

Gallery ONE88 Fine Arts
Thursday to Monday 10am to 5pm
188 Katoomba Street Katoomba NSW 2780 phone: +61 2 4782 1900
info@galleryONE88FineArts.com



Artist Statement

RESILIENT

This exhibition stems from the inaugural Blue Mountains Print Prize, which I was delighted to win in 2019. The winning print was actually a collage that incorporated a number of techniques, none of which needed a press to produce. I wanted to exhibit work that continues to innovate and employ a number of techniques to demonstrate that printmaking can be a flexible and evocative medium.

RESILIENT is about the environment, habitat loss and adaptation. All the fauna featured have had to adapt to change and threats, some doing better than others. The fox through no fault of its own has become the nemesis for so much of this fauna.

Featured in the prints are flora that live with both native and introduced fauna. The lace prints talk about power. Lace was made by those in poverty so the wealthy could adorn themselves. Likewise, those in a position of power-the colonists- have changed this land and its people forever and we are all affected by their reckless invasion.

The prints feature lino plates from my collection alongside newly carved ones. These are the basis for multi exposure, selectively bleached, cyanotypes with a bit of resin thrown in. There are no editions, these are all unique states.

A six-week residency at the Fremantle Arts Centre in 2021 was pivotal in researching the process for these prints and there are plenty more "what if's" to explore.

Alongside these prints are a small collection of collages, mainly botanically printed, that are the forerunner to these works on paper. So often the progression of work and process is not seen, but what has gone before leads to new places through play and experimentation.

Short Bio.

Heather Dunn is a multidisciplinary artist who works mainly in textiles and on paper. She lives in Bathurst with a studio in O'Connell. Her work and inspiration centres on Place. Landscape drawing and painting en plein air, form the basis for designs for woven tapestry and collage.

Lately in response to Covid and its restrictions, our curated landscapes in our houses and gardens are also catching her eye.

Print making and disrupting the process of print making is also a passion, and the cyanotype process is lately a source of experimentation. She feels she has only scratched the surface.

Artist residencies form a backbone to her process development and exploration of ideas. Recent travels around Australia have given her much food for thought on Place and its continuum of history, how humans across time have moved through the landscape and altered it along the way.

BRAEMER HOUSE & GALLERY

104 Macquarie Road, Springwood 2777

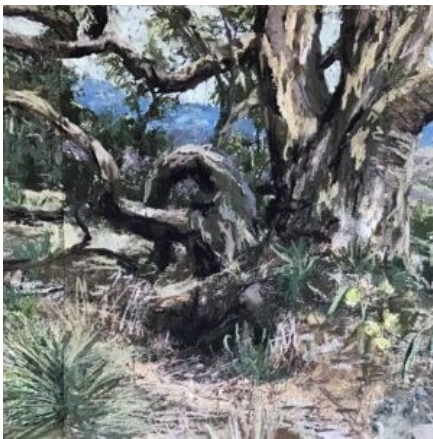
27 October – 20 November



SANDRA COLEMAN *Les chats de Montmartre (detail) 2022*

Sandra Coleman & Adam Wolnicki | *Captured Moments*

Captured Moments showcases still life pastel works, paintings and photographs which elevate the commonplace world around us into certainty, beauty and immortality. Both artists explore introspection and the appreciation of the beauty of everyday things, however humble and the sheer satisfaction expressed in composition, light and colour. The result are works that reflect contemporary times living with a pandemic and periods of isolation, and, unlike abstract works which can confuse or confront the viewer, the still life works create a mood of calmness and quiet contemplation.



CATHERINE FOX *Flinders Red Gum (detail) 2021*

Catherine Fox | *Captured Carbon*

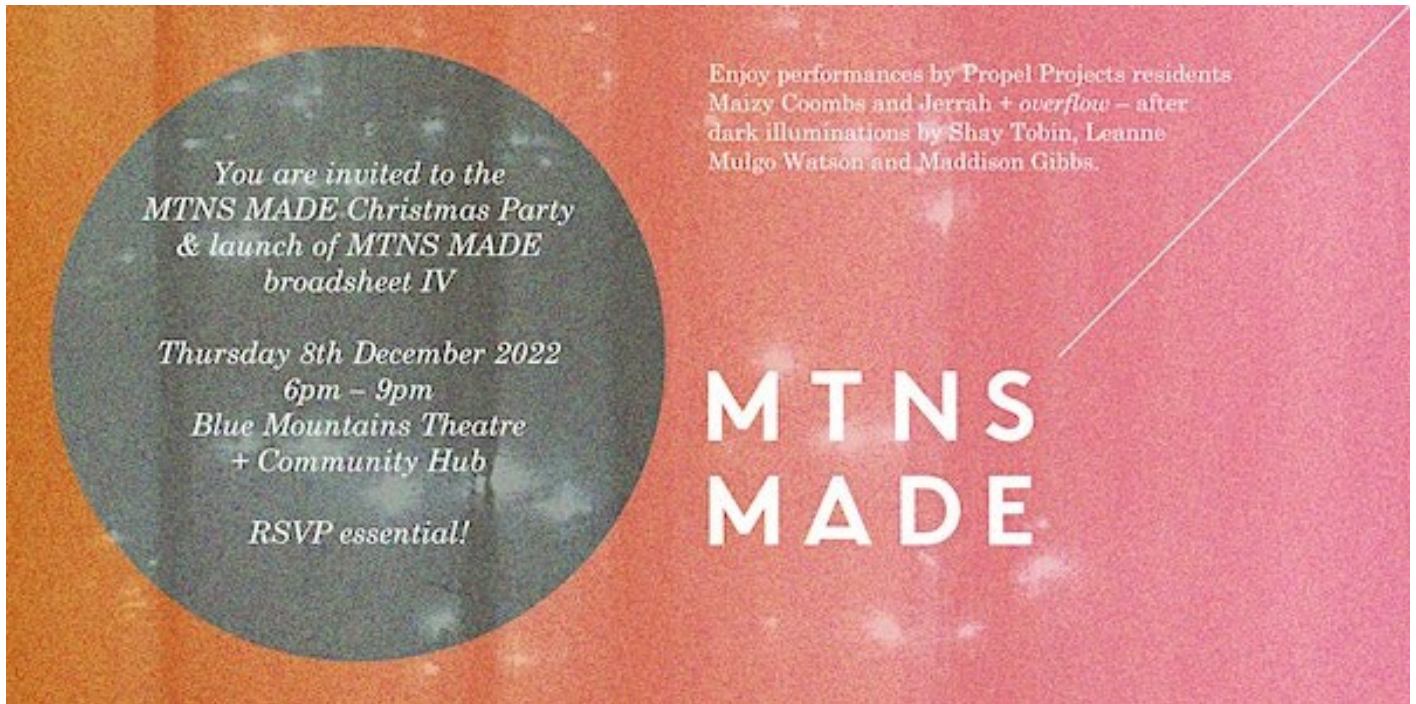
Catherine invites the viewer to celebrate the unique beauty of the Australian landscape, the diversity of the native vegetation and its capacity to regenerate. Paintings reference the wide expanses evident in this landscape as well as the many plants thriving within these expanses. Colour and texture have been used in these images from across Australia to evoke the natural varieties of native bushland and the brilliant flashes of colour we love in our native blossoms.

POWERHOUSE MUSEUM

500 Harris St, Ultimo NSW 2007

Clay Dynasty until 29 January 2023

Clay Dynasty celebrates studio ceramics in Australia as shaped by three generations of makers: from the 1960s pioneers who transformed the functional pottery tradition to contemporary ceramic artists who continue to push the medium. The first major exhibition to chart the astonishing diversity of ceramic practice across Australia, it features more than 400 objects from the Powerhouse's significant ceramics collection. *Clay Dynasty* offers new perspectives by displaying ceramics of the crafts movement alongside postmodern and contemporary artworks of today. Distinctively Australian works complement those inspired by other cultural traditions, bold forms contrast with meditative objects and fine porcelain.



MTNS MADE is hosting an end of year celebration for our fabulous creative community and you are invited!

Please join us for a celebration of your achievements this year ...and drum roll...

the launch of the fourth edition of the MTNS MADE broadsheet!

We will start the evening with a Welcome to Country by Kelsie King and speeches to launch the latest edition. Enjoy performances by Propel Projects residents Maizy Coombs and Jerrah + *overflow* – after dark illuminations by Shay Tobin, Leanne Mulgo Watson and Maddison Gibbs. Snack from a delicious grazing table by Lyttleton Stores.

RSVP is essential! Please RSVP here: <https://www.eventbrite.com.au/e/mtns-made-xmas-party-broadsheet-launch-tickets-443053945277>

Drinks will be available for purchase at the bar. Parking is limited, so catch the train if you can.

I look forward to seeing you there!

Heidi Axelsen

Creative Industries Project Officer

e haxelsen@bmcc.nsw.gov.au

m 0460 019 551

Please note I work part-time on Mondays, Wednesdays and Fridays.

Blue Mtns City Council • council@bmcc.nsw.gov.au • www.bmcc.nsw.gov.au • Locked Bag 1005 Katoomba NSW 2780

Blue Mountains Art Prize

Proudly sponsored by

